

# Artec Jet

High-precision, mobile  
SLAM-based LiDAR system  
for any environment



NEW!

# The complete mobile mapping system: fast, accurate, safe scene capture



**Mapping Speed**  
1,920,000 pts/s



**Survey-Grade Accuracy**  
Up to 10 mm



**Range**  
0.5–300 meters



**Ultra light design**  
1.57 kg

## Wherever the job takes you — Artec Jet is ready

### Industries

Underground Mining

AEC

Defense & Security

Public Safety

Civil Infrastructure

Oil & Gas

Heritage Preservation

Forestry

### Applications

Digital Twins

Site Planning

Inspection

As-Built Documentation

Volumetric Measurement

Change Detection

Condition Assessment

Topographic Surveying

Asset Management

# One device, any environment, every detail captured



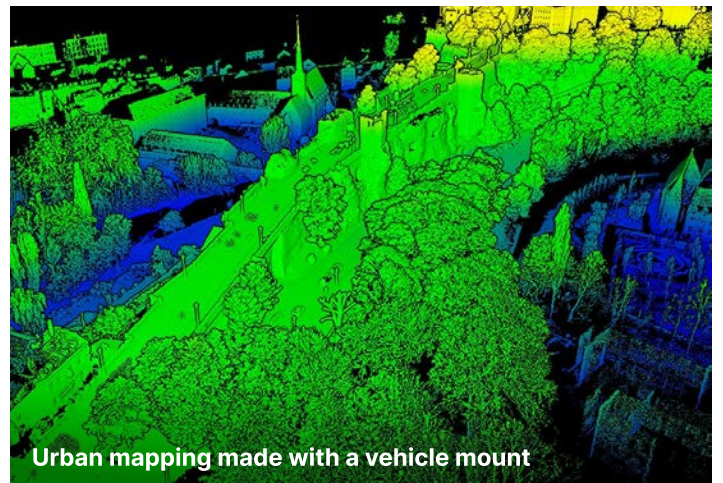
Backpack



3D model of the park made with a backpack



Vehicle mount



Urban mapping made with a vehicle mount



Drone



Underground tunnel mapping made with a drone



7 deployment modes:  
handheld, backpack, drone,  
vehicle, robot, pole, cage



Any environment: indoor,  
outdoor, underground,  
hazardous and hard to reach



Replace an entire fleet of  
tools with one scanner



Easy to use, minimal training  
required

# Scan in tough conditions otherwise beyond human reach



**IP-65  
certified**

**GPS-free  
positioning**

**Zero light  
operation**

**-10 °C to 45 °C  
operating range**

**512 GB  
onboard storage**

## Autonomous drone operation for hard to reach areas

Artec Jet's AI-powered autonomy engine enables drones to reach difficult to access spaces, map GPS-denied environments, and keep your team safe — all without a pilot. Set waypoints and the drone flies autonomously, steering clear of obstacles, while ensuring complete scene capture.

### Collision avoidance

Omnidirectional LiDAR detects obstacles as small as 2 mm pieces of wire, in the tightest spaces.

### Beyond line of sight

Fly autonomously into areas beyond visual range using advanced path planning and proximity sensors.

### Return-to-base failsafe

Artec Jet auto-navigates back to base along a safe, mapped route when on low battery or facing adverse conditions.

# Adapts to meet any project scope and complexity



## Get it right the first time

Boost productivity and efficiency without scaling risk, cost, or operational friction. Artec Jet and its add-ons ensure:

- Real-time point cloud streaming to companion app
- On-site scan preview mode for 100% scene capture
- 360° × 290° FOV — full coverage in a single pass
- Color capture: LiDAR + camera for realistic results
- Optional RTK for GNSS georeferencing above ground
- Local data storage for up to 16 hours of scanning
- Ready to use point clouds and mesh for instant analysis or import to third-party software

## From site to component in one workflow

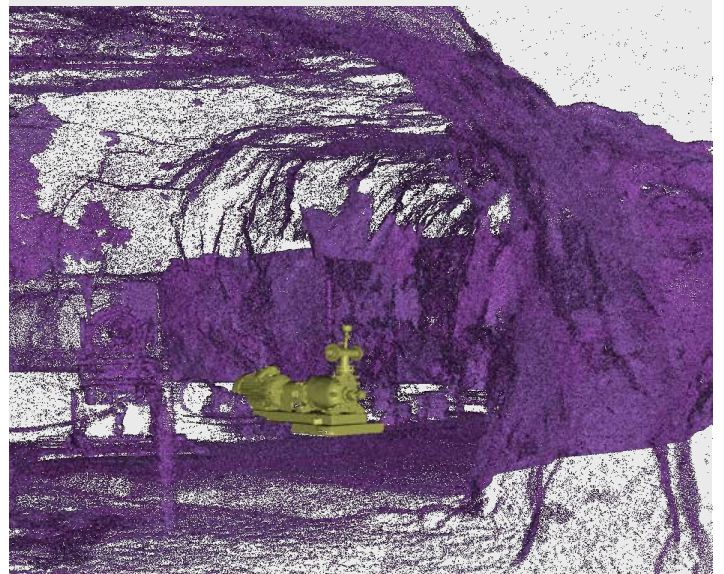
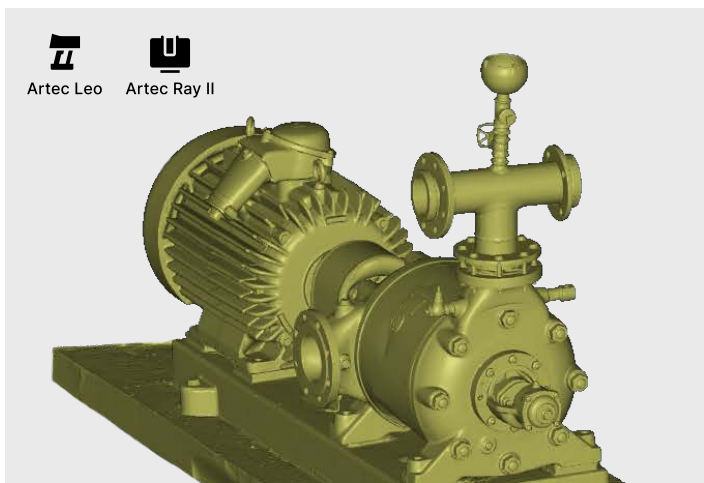
One ecosystem, one workflow for every scale. Artec Jet captures the site. Ray II adds accuracy. Leo details the component. Artec Twins combines them into a single model.



### Artec Twins

Large-scale data fusion & engineering software

- Process and visualize dense point clouds
- Use gaussian splatting for high-fidelity, real-time renders
- Merge Artec SLAM, TLS & close-range scans
- Section, measure, and analyze deviation
- Export to LAS, E57, RCP, STL & OBJ



# Artec Jet

## Specifications



### Mapping

|                                     |  |
|-------------------------------------|--|
| Mapping method                      | SLAM-based LiDAR, ±0.03% drift                                       |
| LiDAR sensing range                 | 0.5–300 m (1.6–984 ft)   |
| Global accuracy                     | 5–10 mm (up to 7/32 in)  |
| Global accuracy (RTK/PPK1)          | 15–30 mm (up to 19/32 in)  |
| Local accuracy                      | 5–10 mm (up to 7/32 in)  |
| Precision                           | Up to 2 mm (5/64 in)   |
| Mapping accuracy (general)          | +/- 15 mm (19/32 in)   |
| Mapping accuracy (indoor)           | +/- 10 mm (3/8 in)   |
| Change detection                    | +/- 5 mm (7/32 in)   |
| Field of view                       | 360° × 290°  |
| Acquisition (single return)         | Up to 640,000 pts/s  |
| Acquisition (triple return)         | Up to 1,920,000 pts/s  |
| Max speed (vehicle)                 | 60 km/h (37.3 mph)   |
| Max speed (flight, above)           | 5 m/s (16.4 ft/s)  |
| Max speed (flight, underground)     | 2 m/s (6.6 ft/s)   |
| Start/stop while moving             | Yes  |
| Laser class                         | Class 1 (eye safe)   |
| <b>Physical &amp; Environmental</b> |  |
| Ingress protection                  | IP65   |
| Operating temperature               | -10 to 45°C (14–113°F)   |
| Weight                              | 1.57 kg (3.46 lb)  |
| Power                               | 14–54 V, 64W   |
| Onboard storage                     | 512 GB – approximately 16 hours of sensor data                       |
| Quick release mount                 | Yes  |
| Deployment modes                    | 7 (Drone/UAV, handheld, backpack, vehicle, pole, cage, ground robot) |
| Battery life                        | 2 hours  |
| Charging time                       | 3–4 hours approx.  |

### Output & File formats

|                     |                                    |
|---------------------|------------------------------------|
| Point cloud formats | .las .laz .ply .E57                |
| Outputs             | Full/decimated cloud, trajectory   |
| Point attributes    | Intensity, range, time, RGB (opt.) |

### Autonomy & Safety

|                            |                                       |
|----------------------------|---------------------------------------|
| Pilot Assist               | Non-GPS, position hold, collision av. |
| Autonomous mode            | Waypoint navigation                   |
| AL2 waypoint types         | 2D, 3D, planar, height                |
| AL2 navigation             | Guided exploration, path planning     |
| Collision avoidance FOV    | 360° × 360°                           |
| Collision avoidance range  | 1.2–40 m (3.9–131 ft)                 |
| Min. obstacle detection    | ≥2 mm wire                            |
| Adjustable safety distance | Yes                                   |
| Return-to-home             | Low battery / dust trigger            |

### Drone platforms

|                  |                                       |
|------------------|---------------------------------------|
| Supported drones | DJI M300, DJI M350, Freefly Astro Max |
|------------------|---------------------------------------|

### Interfaces

|                |                       |
|----------------|-----------------------|
| Auxiliary port | Proprietary connector |
| USB            | Yes                   |
| Wi-Fi          | Internal antenna      |

Ready to see Artec Jet on your site?

Learn more about Artec Jet  
[www.artec3d.com](http://www.artec3d.com)

